

Weather**PRO**® OAB

PRO**Electrical** Mounting Blocks

OAB
over air barrier
Weather Protection



Built-in Strain Relief

Only one small hole required for the wire, protecting the integrity of the building envelope



Say goodbye to leaky buildings with this fast and inexpensive solution

- Eliminates the need to cut into the building envelope with anything larger than the size of the electrical wire.
- Patented system diverts water from the back wall before it can penetrate the building envelope.
- Saves time and labour with a two-in-one application.
- CSA/UL approved.
- Ideal for manufactured homes.



Two designs available:
PROElectrical Plug Block & PROElectrical Light Block

UL Approved



duraflo.com
WE KNOW VENTILATION

www.duraflo.com

CAN: 1-800-461-1771 USA: 1-888-461-5307

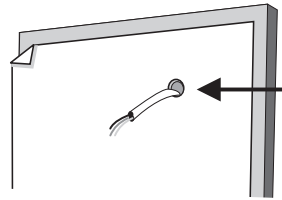
canplas

an OAliaxis company



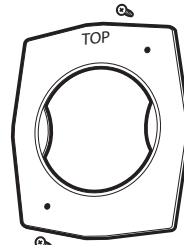
WeatherPRO[®] OAB
PRO Electrical
 Mounting Blocks

New construction installation:

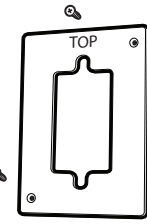


STEP 1

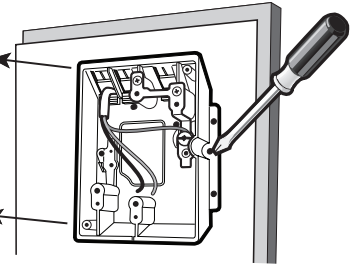
- Drill 3/4" hole through exterior wall sheeting.
- Install Exterior Air Barrier over wall sheeting.
- Extend electrical wire min. 8" through opening.



Light Mount



Plug Mount

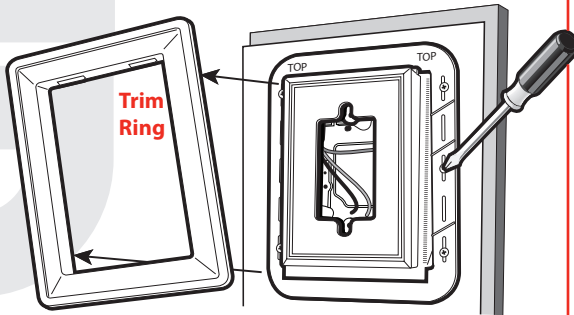


STEP 2

Light and Plug Mount models: Remove cover by removing two screws. Fasten OAB Electrical Box to the wall "over air barrier" using two #8 - 1 1/4" screws.

Plug Mount: Install ground wire before installing cover.

Light and Plug Mounts: Replace cover removed at the beginning of Step 2.

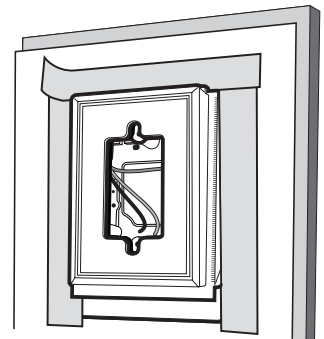


STEP 3

- Remove Trim Ring from self-flashing cover (flex slightly to disengage the Trim Ring).
- Place self-flashing Plug Mount/Light Mount cover over OAB Electrical Box, ensuring the side marked TOP is positioned correctly (TOP must be correct to divert water out over exterior finish).
- Level and install Light Mount/Plug Mount using four #8 - 1 1/4" screws.

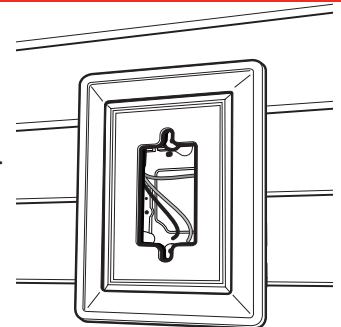
STEP 4

- Install Self-Adhesive Membrane over the nailing flange on right and left sides, then overlapping across the top.



STEP 5

- Once exterior finish (siding, stucco, brick, rock, etc.) is complete, install trim ring by simply snapping it into place.
- Reversible trim ring will accommodate 5/8", 3/4", 1" or 1 1/4" thickness.



Description	PART #	Size	CTN. QTY.
PRO Electrical Plug Block	641095-00	5-3/4" x 7-1/2"	12
PRO Electrical Light Block	641055-00	7-1/2" x 8-1/2"	12



CANADA

Canplas Industries Ltd.
 P.O. Box 1800, 500 Veterans Dr.
 Barrie, Ontario
 Canada L4M 4V3
 Tel: (705) 726-3361
 Fax: (705) 726-8991
 Toll Free: 1-800-461-5300

Canplas Industries Ltd.
 11408 - 163rd Street
 Edmonton, Alberta,
 Canada T5M 3T3
 Tel: (780) 451-3206
 Fax: (780) 452-0536
 Email: prairie.sales@canplas.com

Canplas Industries Ltd.
 9489 - 200 Street, Unit 201
 Langley, B.C.
 Canada V1M 3A7
 Tel: (604) 455-0432
 Fax: (604) 455-0452
 Email: bc.sales@canplas.com

USA

Canplas LLC
 11402 East 53rd Ave., Suite 200
 Denver, Colorado
 U.S.A. 80239
 Tel: (303) 373-1918
 Fax: (303) 373-1923
 Toll Free: 1-888-461-5307

E-mail: duraflo@canplas.com
www.duraflo.com



an OAliaxis company